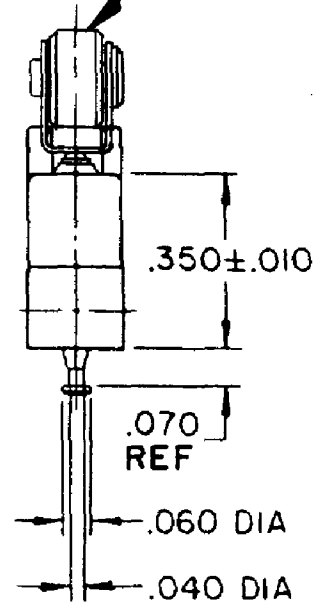
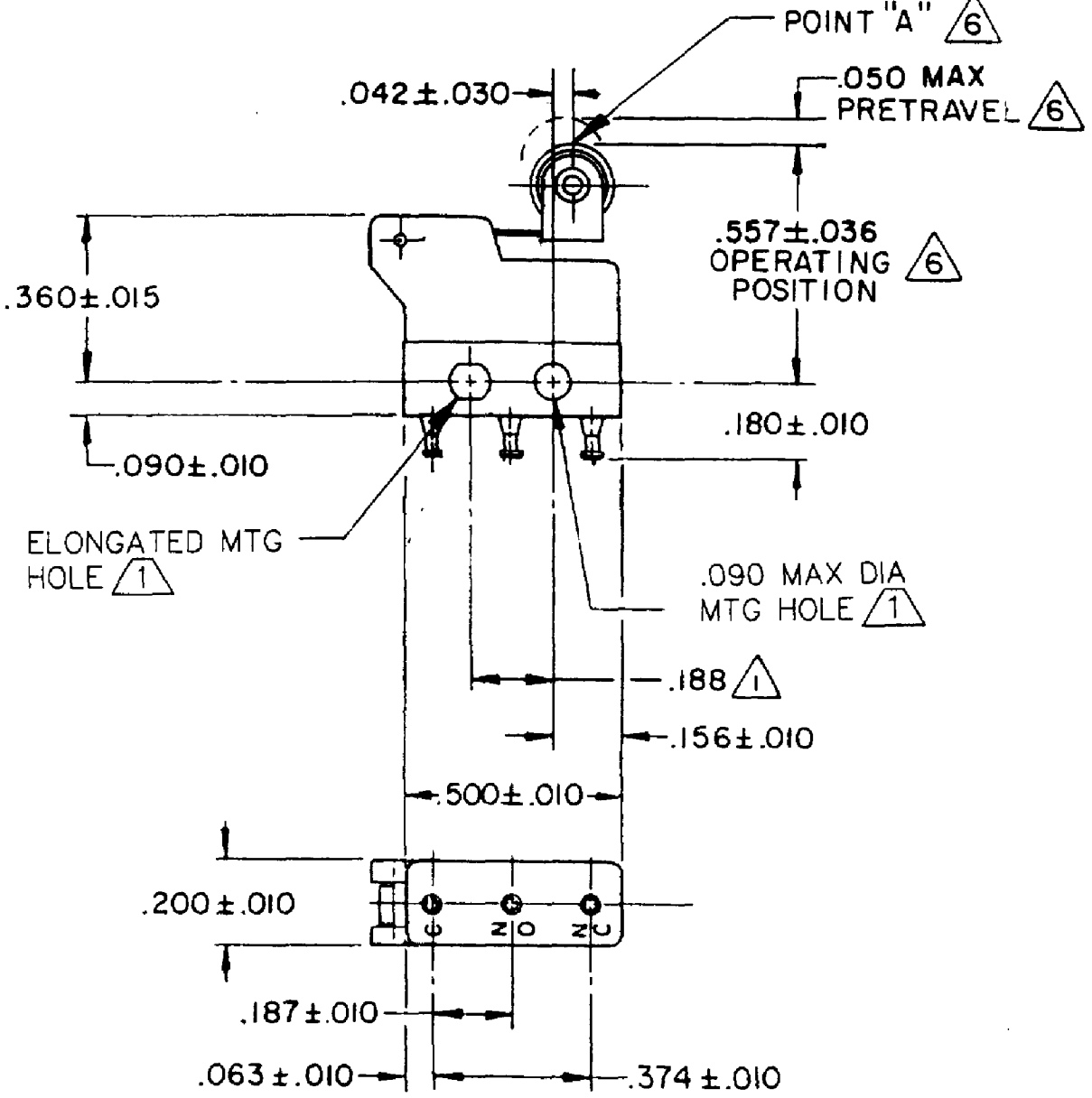
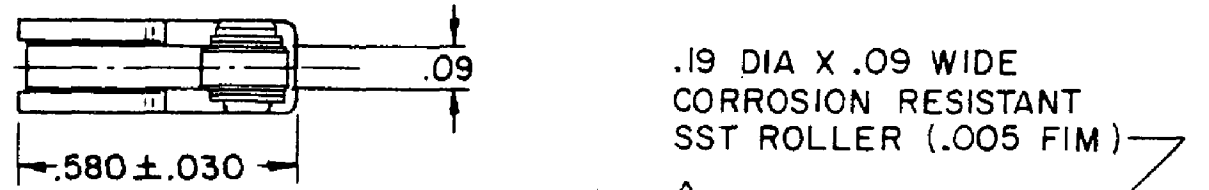


HONEYWELL PART NUMBER
313SX30-T
PRODUCT CODE VDT0273

REV	DOCUMENT	CHANGED BY	CHECK
7	0038558	SS 08MAY08	BLR



NOTES

- ① MOUNTING HOLES WILL ACCEPT PINS OR SCREWS OF .087 MAX DIA ON .188 ± .002 CENTERS
- 2 - TERMINALS ARE SOLDER DIPPED WITH RoHS-COMPLIANT TIN/COPPER/SILVER SOLDER.
- 3 - SWITCH WILL WITHSTAND TEMPERATURE OF 250°F
- 4 - MOVABLE CONTACT MATERIAL - 24K GOLD OVERLAY
- 5 - STATIONARY CONTACT MATERIAL - GOLD ALLOY
- ⑥ CHARACTERISTICS ARE TAKEN AT POINT "A"

RELEASE NO.	PR-16995-T
REPLACES	X89561-SX

CHARACTERISTICS	△
OPERATING FORCE	68 GRAMS MAX
RELEASE FORCE	11 GRAMS MIN
DIFFERENTIAL TRAVEL	.015 MAX
OVERTRAVEL	.010 MIN

ELECTRICAL DATA		
CONTACT ARRANGEMENT SPDT		
30 VOLTS DC RATING		
	SEA LEVEL	50,000 FT
INDUCTIVE	0.5 AMP	0.5 AMP
RESISTIVE	1 AMP	1 AMP
MAXIMUM INRUSH 2 AMP		
APPROVALS	KEMA, CE	1A 250 V - T125 25E3
	UL, CSA	1A 125 VAC

DESIGN UNITS: INCH
TOLERANCES UNLESS NOTED:
NO PLACE X ±
ONE PLACE .X ±
TWO PLACE .XX ±
THREE PLACE .XXX ±
FOUR PLACE .XXXX ±
ANGLES ±
THIRD ANGLE PROJECTION

DRAWN	SPK	27FEB08
CHECK	RJ	27FEB08
THIS DRAWING COVERS A PROPRIETARY ITEM AND IS THE PROPERTY OF HONEYWELL. THIS DRAWING IS NOT TO BE COPIED OR USED WITHOUT THE PERMISSION OF HONEYWELL.		
INTERPRET PER ANSI Y14.5M-1982 OTHER HONEYWELL ENGINEERING STANDARDS MAY APPLY		
RASTER		

Honeywell			
TITLE SWITCH - BASIC			
SIZE	TYPE	DRAWING NAME	REV
B	I	313SX30-T	7
SCALE	-	WEIGHT: .003 LB MAX	SHEET 1 OF 1